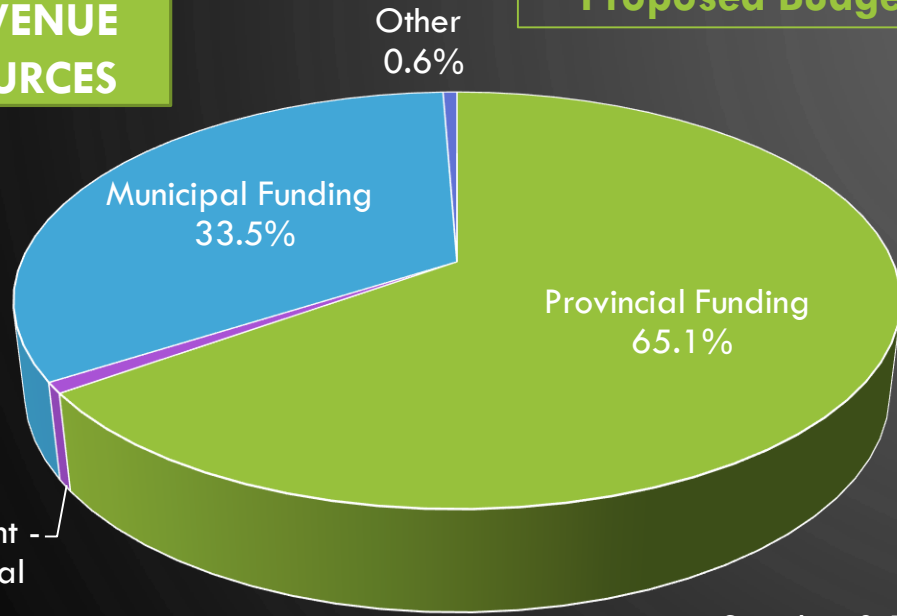


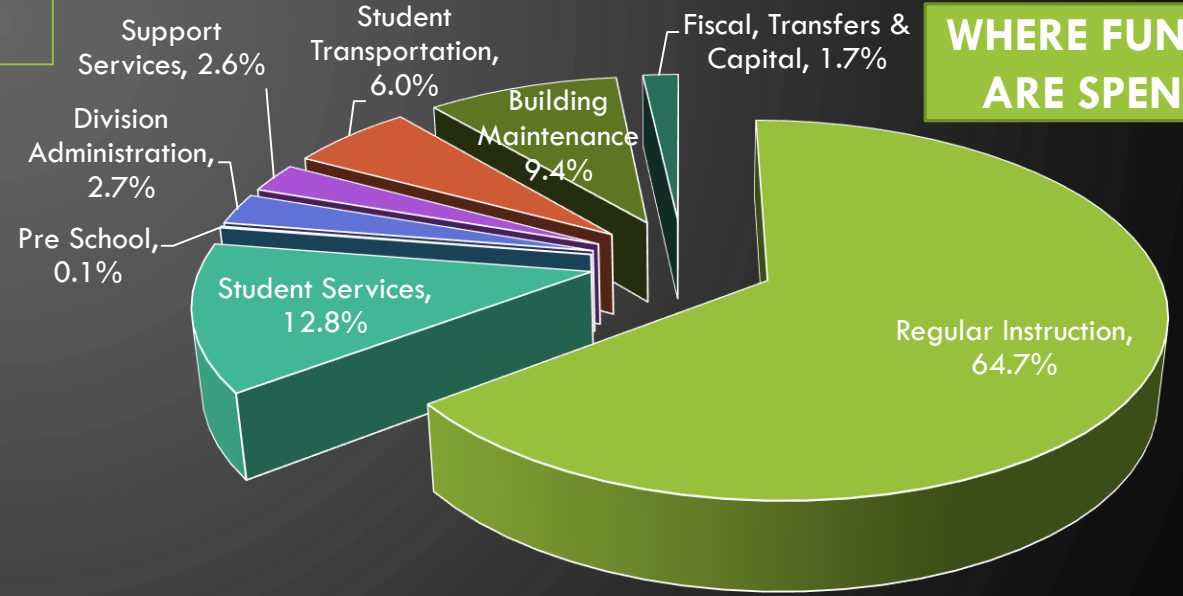
# BEAUTIFUL PLAINS SCHOOL DIVISION

## Proposed Budget 2021 - 22

### REVENUE SOURCES



### WHERE FUNDS ARE SPENT



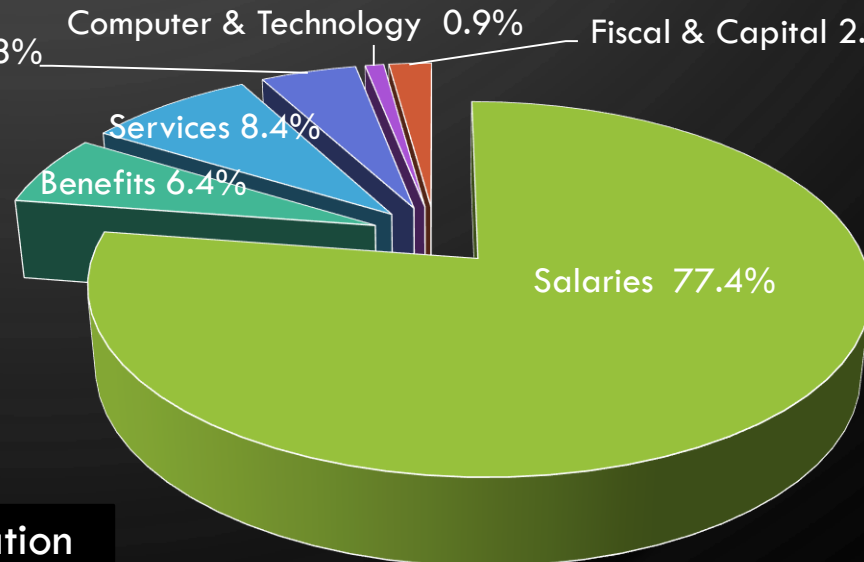
### SCHOOL PROPERTY TAXES

The proposed budget will result in a property tax decrease when assessed values remain the same. Decreases are estimated as follows:

| Property Type | Property Value | Annual \$ Change |
|---------------|----------------|------------------|
| Residential   | \$200,000      | \$9.22           |
| Farmland      | \$200,000      | \$5.33           |
| Commercial    | \$200,000      | \$13.32          |



### EXPENDITURE TYPES



Feedback and comments can be emailed to [bpsd@bpsd.mb.ca](mailto:bpsd@bpsd.mb.ca)

Visit [www.beautifulplainssd.ca](http://www.beautifulplainssd.ca) for budget video and presentation